

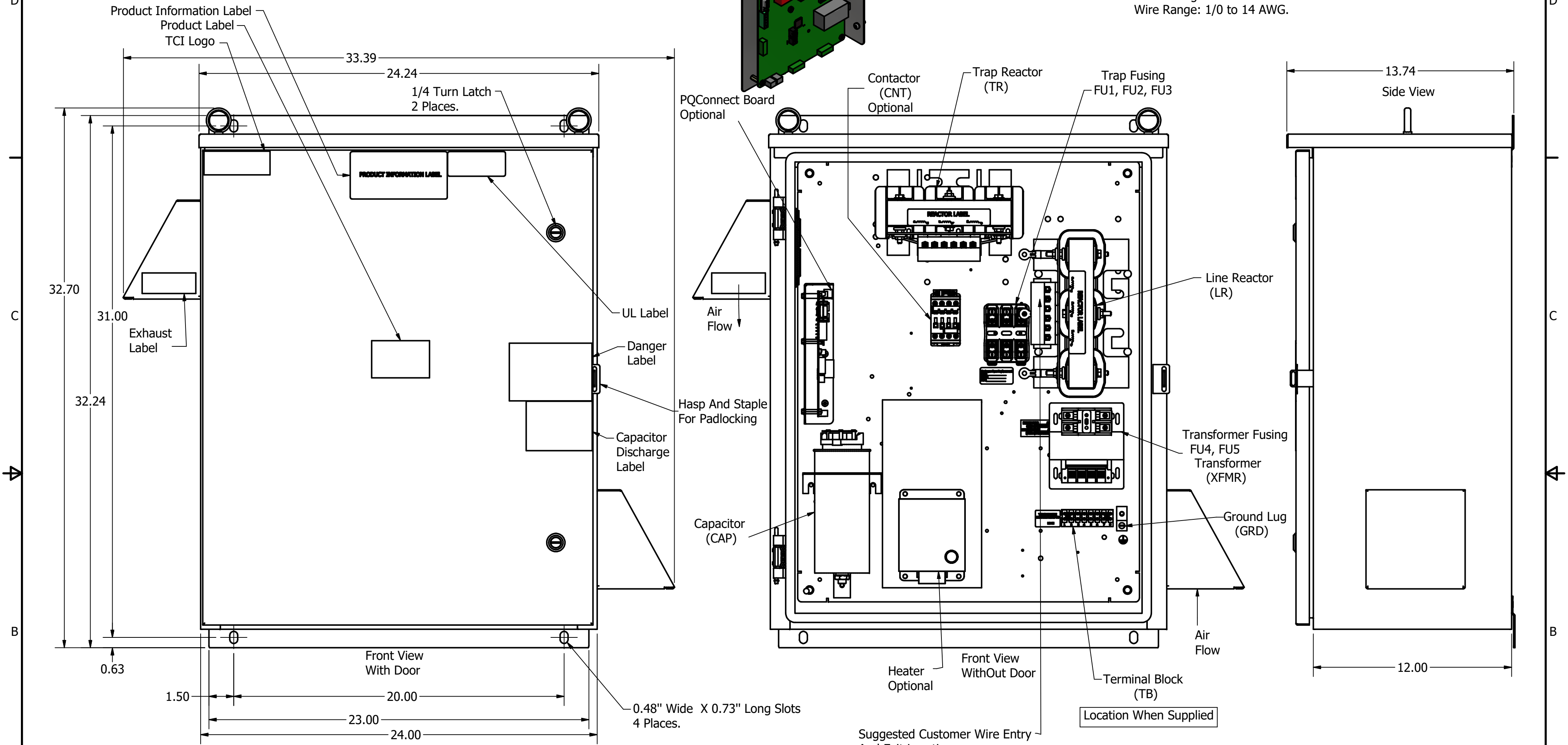
HGP Part Number	Schematic Drawing #	Approx Weight (LBS)
HGP0008DW3S0000	28697-208-2S	144
HGP0008DW3C0000	28697-208-2	145
HGP0008DW3C000H	28697-208-2H	149
HGP0008DW3S1000	29597-DWPQ1	147
HGP0008DW3C1000	29597-DWPQ	148
HGP0008DW3C100H	29597-DWPQH	152

HGP Part Number	HorsePower (HP)	Maximum Amps (A)	kVar	Harmonic	Voltage (V)	Hz.	Phase
HGP0008DW3----	7.5	24.2	1.9	5th	208	60	3

Note: For Torque Information
See IOM Manual

Customer Connections.
L1, T1, L2, T2, L3, T3
Wire Range: 1 AWG to 22 AWG.


Ground Lug
Wire Range: 1/0 to 14 AWG.



HGP0008DW3----						
Components	S0000	C0000	C000H	S1000	C1000	C100H
Line Reactor (LR)	x	x	x	X	X	X
Trap Reactor (TR)	x	x	x	X	X	X
Capacitor (Cap)	x	x	x	X	X	X
Trap Fusing, FU1, FU2, FU3	x	x	x	X	X	X
Contactor (CNT)		x	x		X	X
Transformer (XFMR)	x	x	x	X	X	X
XFMR Fusing, FU4, FU5	x	x	x	X	X	X
Heater			x			X
PQConnect Board				X	X	X

NOTE: USE ONLY HUBS OR FITTINGS THAT COMPLY WITH UL514B FOR TYPE 3R ENCLOSURES

Customer Is Responsible For Installation to Meet All National And Local Electrical Codes.

THE INFORMATION AND DESIGNS CONTAINED IN THIS DRAWING ARE CONFIDENTIAL AND THE PROPRIETARY PROPERTY OF ALLIED MOTION TECHNOLOGIES INC. AND ITS SUBSIDIARIES. NEITHER THIS DESIGN NOR ANY INFORMATION CONTAINED IN THIS DRAWING MAY BE REPRODUCED OR DISCLOSED TO OTHERS WITHOUT THE EXPRESS WRITTEN CONSENT OF ALLIED MOTION TECHNOLOGIES INC. AND ITS SUBSIDIARIES.	TOLERANCES (EXCEPT AS NOTED)			 W132N10611 Grant Drive Germantown, WI 53022 © 2021 TCI, LLC An Allied Motion Company HarmonicGuard Passive, HGP0008DW3---- 7.5HP, 208/3/60, Type 3R			
	DECIMAL						
	.XX ± .25 .XXX ± .10						
	FRACTIONAL ± 1/16						
NO	REVISION	DATE	BY	ANGULAR ± 1°			
A 5712 - Add PQConnect			09/08/21	JRN	DRN BY JRN	DATE 10/06/17	107358DG
SCALE: 1/8			APRVD:	SIZE C	SHT. 1 OF 1		